

SMARTCASE™ S520

Chassis Kit Solution



Mini-STX Motherboards
D3654-B, D3664-B

FOR

Industrial chassis for enhanced operating temperature range

- ▶ Ultra-Compact Design
- ▶ 36 x 147 x 165 mm
- ▶ Front & Rear USB
- ▶ Horizontal or Vertical Operation
- ▶ VESA- and Wall Mount Option

POSSIBILITIES START HERE

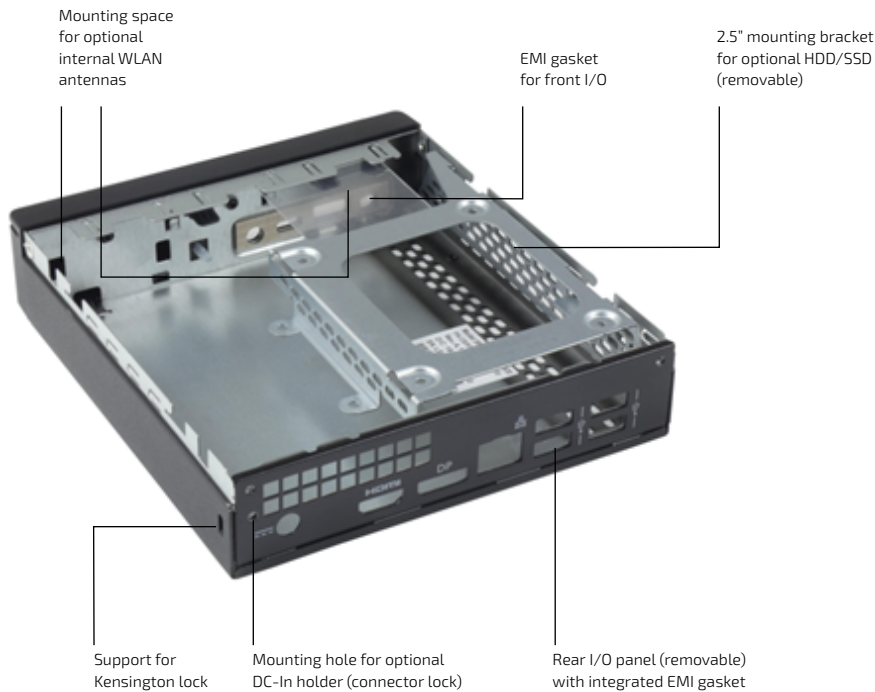


kontron
S&T Group

▶ TECHNICAL INFORMATION

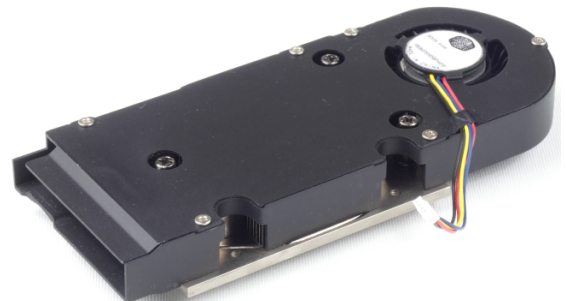
CHASSIS DATA	DIMENSIONS COLOUR WEIGHT	36 x 147 x 165 mm (W x H x D) black ~ 0.4 kg
ENVIRONMENTAL CONDITIONS	OPERATING TEMPERATURE HUMIDITY	0 °C - 40 °C* 5 % - 85 % relative humidity (non-condensing)
APPROVALS & CERTIFICATIONS	EMC	CE Class B, Industrial Immunity (EN 61000-6-2), FCC Class B (verified)
PACKAGE CONTENT		Chassis desk stand (vertical mode, removable) Rubber feet (horizontal mode, removable) Mounting bracket for 2.5" SATA drive (HDD or SSD) Chassis bottom/top incl. front bezel; Rear I/O with integrated EMI gasket
CHASSIS FEATURES	THEFT PROTECTION MOUNTING OPTIONS	Kensington lock support Integrated WLAN antennas Wall Mount VESA Kit DC-in holder Cooling solution
REQUIREMENTS FOR AC ADAPTER	SAFETY	Compliance with IEC 62368-1 according clause 6.2.2. to power source category PS2 ("Limited Power Source") required!

*Chassis ambient temperature; upper limit depends on system configuration



▶ HEATSINK (OPTIONAL)

- ▶ Specific heatsink (heatpipe / fan) designed for 35 W TDP
- ▶ DC blower, PWM @ 5 V, max. 3 W, 60 x 15 mm
- ▶ Max. 6.300 rpm, max. 53 dbA, 50.000 hrs @ 40 °C
- ▶ Weight ~ 150 g



▶ CHASSIS SAMPLE CONFIGURATION

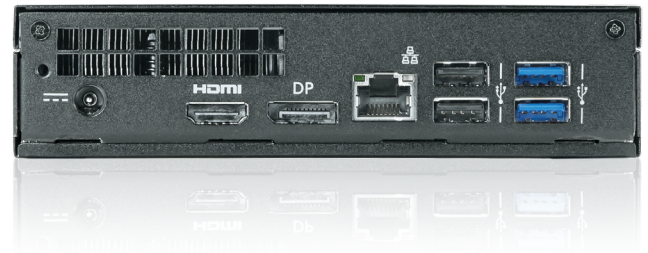
- ▶ Motherboard D3654-B
- ▶ Heatsink
- ▶ M.2 2280 SSD
- ▶ M.2 2230 WLAN/Bluetooth
- ▶ SO-DIMM DDR4
- ▶ HDD/SSD mounting bracket (no drive installed)
- ▶ Chassis top cover not shown



▶ CHASSIS REAR VIEW

- ▶ Rubber feet for horizontal operating mode installed (fixed by screws)

Note: As the motherboard D3664-B provides an additional USB type-C port a different rear chassis wall is required for SMARTCASE S520. This chassis wall (K1056-B520) is included in the D3664-B motherboard delivery kit.



▶ ORDERING INFORMATION

ARTICLE	PART NO.	DESCRIPTION
SMARTCASE™ S520	F5000-J010	1x chassis kit
ACCESSORIES		
VESA MOUNTING KIT	F5000-X002	VESA adapter incl. mounting screws
AC ADAPTER 19V / 65W	F5000-P006	AC Adapter, 19 V/3.4 A, 65 W
SATA DATA/POWER CABLE	F5000-K012	for optional 2.5" drive
INTERNAL WLAN ANTENNA KIT	F5000-W005	WLAN antenna kit; left (grey)/right (black) antennas incl. cable. M.2 WLAN module not included!
WALLMOUNT BRACKETS	F5000-X001	2x Brackets per chassis incl. screws
DC-IN HOLDER	F5000-X003	Holder incl. screws
HEATSINK	F5000-C012	Specific heatpipe-cooler with fan for SMARTCASE™ S520

▶ GLOBAL HEADQUARTERS

Kontron Europe GmbH

Gutenbergstraße 2
85737 Ismaning, Germany
Tel.: +49 821 4086-0
Fax: +49 821 4086-111
info@kontron.com

www.kontron.com