

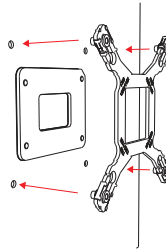
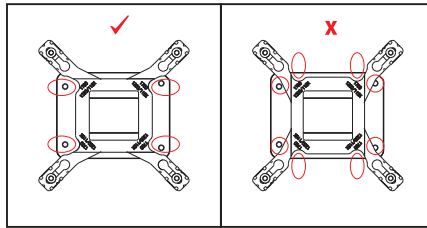
# U9

Intel LGA 1700/1200/115X

## INSTALLATION GUIDE

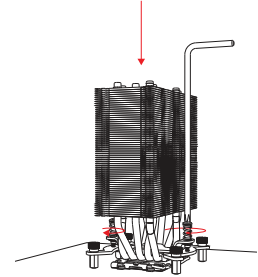
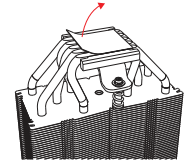
### 安装指南

#### Step 1 (Continued):



#### Step 4:








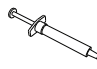
Remove the protector and install the cooler onto the motherboard / 移除保护贴, 安装散热器至主板



#### Intel Components & Tool/Intel 安装所需零件及工具

#### Intel LGA 1700/1200/115X Installation

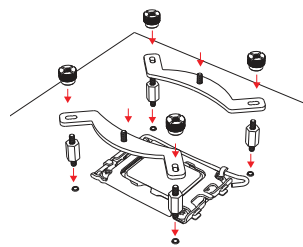
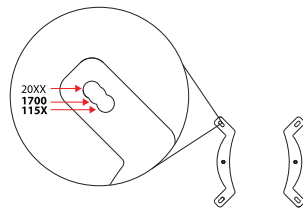
#### Intel LGA 1700/1200/115X Installation

1		2		3	 x 2
4		5		6	 x 4
7	 x 4	8		9	*Not Included/ 产品未附

1. Cooler / 散热器
2. Fan / 风扇
3. Fan Clip / 风扇卡扣
4. Intel Retention Bracket Pair / Intel脚架组
5. Intel backplate / Intel背板
6. LGA 1700/1200 / 115X Screws/LGA 1700/1200/115X 螺丝
7. Thumb screw / 手拧螺丝
8. Thermal grease / 导热膏
9. Philips Head Screw Driver (Not Included) / 十字螺丝刀 (产品未附, 需自行准备)

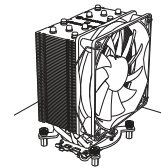
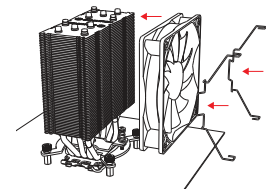
#### Step 2:

Install the 1700/1200/115X screw, Intel bracket, and the thumb screw / 安装1700/1200/115X螺丝、Intel脚架和手拧螺丝



#### Step 5:

Use the fan clip, install the fan onto the cooler / 使用风扇卡扣, 安装风扇至散热器



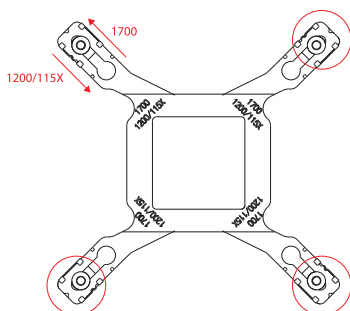
#### Intel LGA 1700/1200/115X Installation

#### Intel LGA 1700/1200/115X Installation

#### Intel LGA 1700/1200/115X Installation

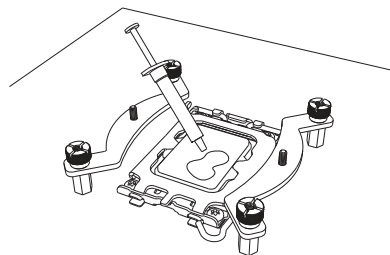
#### Step 1:

Install the Intel back plate. Slide the threaded holes to adjust the mounting pitch for Socket 1700 or Socket 1200/115X. Please pay attention to the installation orientation / 安装Intel背板。滑动螺纹孔, 调整节距以适应Socket 1700或Socket 1200/115X平台。注意安装方向



#### Step 3:

Apply the thermal grease / 涂导热膏



#### Step 6:

Connect the 4 Pin fan connector to the motherboard / 连接4 Pin风扇接头至主板

